

eMedia Card Designer

eMedia is the perfect tool for graphic, magnetic and electronic personalization of plastic cards. Powerful yet ergonomic, it answers to the professional demand while still being a very user-friendly printing solution for loyalty cards, access control or any other applications.

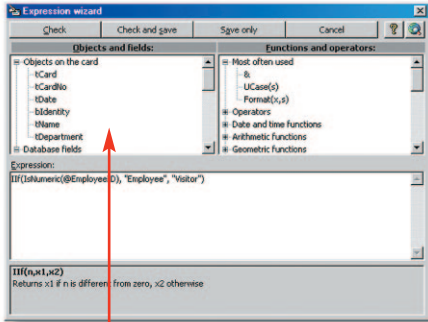
The screenshot displays the eMedia Card Designer software interface. The main window shows a card design for "Planet Home Company" with a photo of David Pebble. The card includes the text "David PEBBLE Ecology Department", a "Card ID" of "00001", and a date of "10/06/2003". A barcode is visible at the bottom of the card. The software interface includes a menu bar (File, Edit, View, Insert, Format, Card, Tools, Help), a toolbar, and a sidebar with various design tools. An "Input" panel on the right lists fields for personalization, such as LASTNAME, FIRSTNAME, REGISTER ID, CARD ID, COMPANY, PHONE, FAX, EMAIL, ADDRESS, CODE, CITY, COUNTRY, DATE, IDENTITY ID, Department, and Identity picture. The background of the software interface features a repeating pattern of the "MEDIASOFT" logo.

In order to test all the Pro Version advantages before buying it, **eMedia** has a Pro Demo mode that you can easily activate from the standard version supplied with the installation CD.

Designed for the Evolis Card Printer range

■ The **fully WYSIWYG environment** facilitates creation and printing of all your cards and badges. Implement your card layouts with texts, images, photos, bar codes and geometrical forms.

■ eMedia features two different modes depending on the user's profile. A **Design Mode** to build up your different layouts and an **Operating Mode** to edit and print your cards.



Similar to the Microsoft Excel cell formulas, the Windows assistant helps you to program advanced expressions, allowing a large number of operations to be performed automatically on bar code objects, magnetic stripes, smart card and text fields. eMedia answers the more advanced applications

■ Easy to use, an **"Help Assistant"** on all functions guides you in your daily activities and is accessible by simply pressing the F1 key at any time.

■ Create your cards using any **standard database** then print, encode magnetic stripes or smart cards in one single operation.

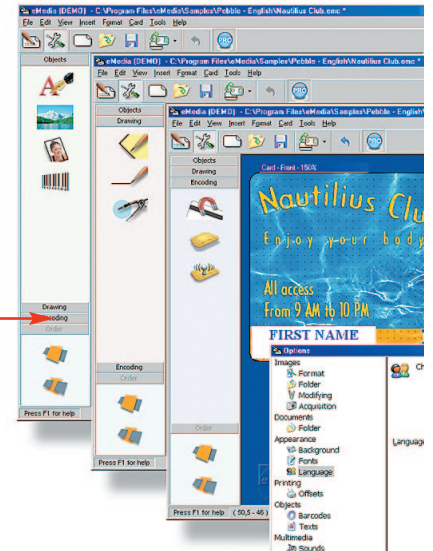
■ Connect eMedia to your database from one **workstation** or on a **network** to read, create or modify a database record.

■ eMedia Card Designer integrates in a standard way the **image acquisition** via the Twain interface of the digital cameras and scanners.

■ Menus and icons display their functionalities in one of the **seven languages available** : **english, french, german, italian, portuguese, spanish and japanese.**

■ To obtain your **Pro licence** and then access to the **Pro version functionalities**, purchase an **Activation key** from your Evolis reseller that will provide it quickly by email or over the phone.

■ eMedia runs under Microsoft Windows 95, 98, 98SE, Me, NT 4.0, 2000 et XP.

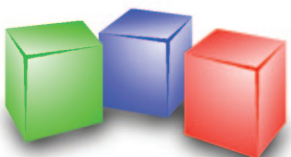


eMedia features all the tools required to manage graphic creation. You easily handle logos, photos, bar codes and datas to personalize your cards.

	eMedia Pro specificities	PRO
Standard databases	Connect to any standard database : Microsoft Access, Microsoft SQL Server, Oracle, ODBC compliant databases, IBM DB2, Sybase, Microsoft Excel, etc.	✓
Data source	Database field values can be used in text, barcode and image object	✓
Image storage	Path to image files acquired stored in database fields	✓
Expressions programming	Wizard provided to create powerful programmable objects	✓
CoolReader technology	A database record can be selected by reading the barcode or the magnetic strip of the card	✓
C.O.M serveurur	Easily integrate eMedia in your own applications or documents. Control eMedia from a Microsoft Excel worksheet, a Microsoft Access application or an HTML page.	✓
Plug-ins	Extend the features of eMedia with third-party components	✓
Selective printouts	Based on SQL command or range of values	✓

MINIMUM REQUIREMENTS

PC with Pentium II 266 MHz or greater, Celeron 266MHz or greater
 36 MB available RAM - Windows 95, 95 OSR2, 98, 98 SE, Me, NT4, 2000 and XP
 Minimum 20 MB free hard disk space - Graphic adapter capable of displaying 16bit color (65536 colors) and 800x600 resolution - Super VGA monitor - Quad speed or faster CD-ROM drive
 Mouse or compatible pointing device - Parallel Port - USB port if using a USB capture device.



MEDIASOFT
TECHNOLOGIES

www.emedia-cards.com

info@emedia-cards.com